

DESCRIPTION

- » Internal seen section of just 18 mm
- » Minimalist and slim look
- » Its mullions and transoms offer, as a result of their joint, an uniform union on the outside face of the curtain wall
- » The combination of mullions and transoms is compatible with the following systems: TP 52, SG 52, TPH 52, TPV 52, ST 52 and SST 52



TECHNICAL DATA

» Glazing

Maximum glazing: 50 mm
Minimum glazing: 4

» Opening possibilities

Hidden top hung projecting, hidden turn&tilt and hidden side hung

» Sections

Mullion – 18 mm / Transom – 18 mm

» Profile thickness

Mullion 2,6mm
Transom 2,6 mm

» 6, 12 & 30 mm stackable profiles (with thermal bridge system) »

Maximum / minimum dimensions
Projecting opening

Max. Width (L)=2.500mm

Max. Height(H)=2.500 mm

Min. Width (L)= 500 mm

Min. Height (H)=650 mm

Min. Height (H)=650mm

Turn&tilt opening

Max. Width (L) = 1.400 mm

Max. Height (H) = 1.900 mm

Min. Width (L) = 500 mm

Min. Height (H) = 660 mm

» Maximum weight

Projecting opening 180 Kg

Turn-tilt opening 100 Kg

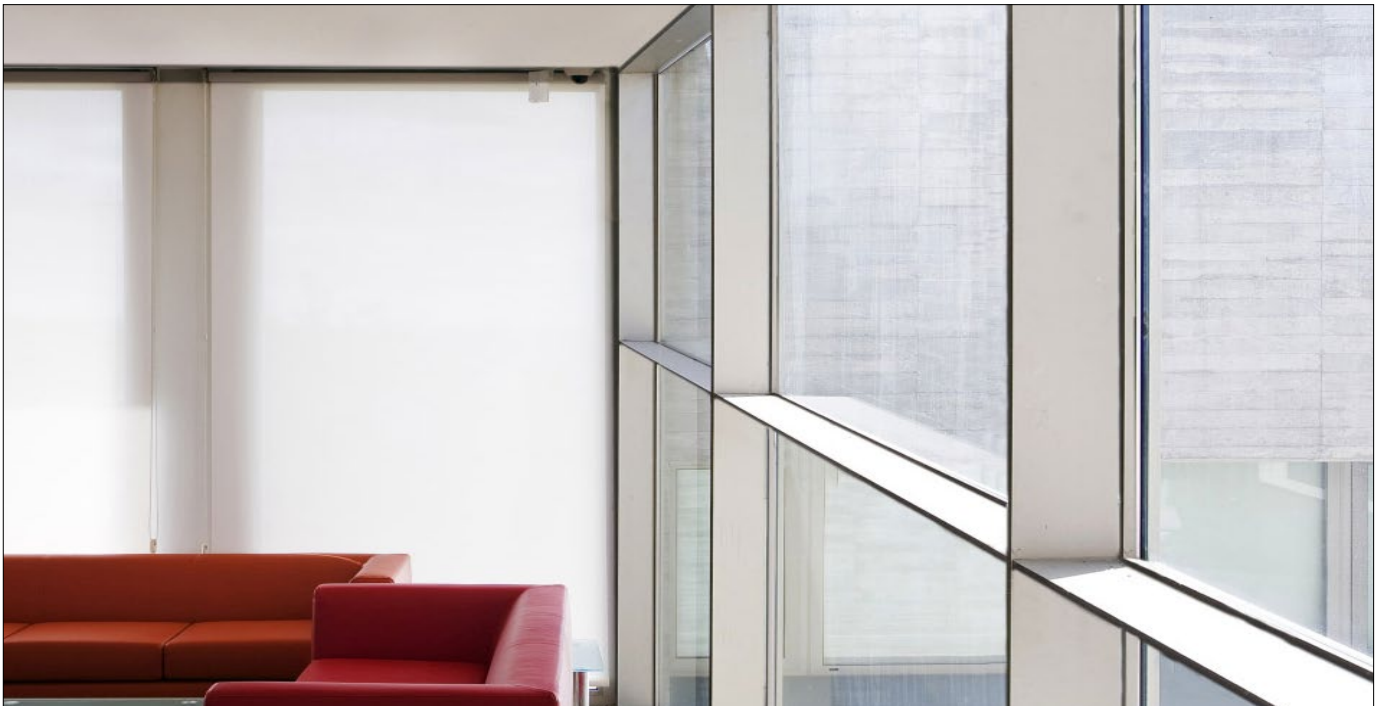
» Covers

85 mm deep elliptical cover.

H shape cover, 34 mm deep.

Rectangular cover:14, 19 100 & 145
mm deep

Pyramid shape cover, 155 mm deep



TEST CENTRE

» Transmittance

Ucw from 0,8 (W/m²K)

Please consult dimensions and glazing

» Air permeability

(EN 12152:2000) CLASS AE

» Water tightness

(EN 13114:2001) CLASS RE750

» Wind resistance

(EN 13116:2001) APT

(design loading 1200 Pa- security loading 1800 Pa)

Test reference 3,00 x 3,50 m.

» Finishes

Color powder coating (RAL, mottled and rough)

Wood effect powder coating

Anti-bacterial powder coating

Anodized

