

DESCRIPTION

» Wide variety of mullions (from 16 to 230 mm) and transoms (from 22,5 to 205,5) that solve the different aesthetic and constructive needs of the architectonic sector

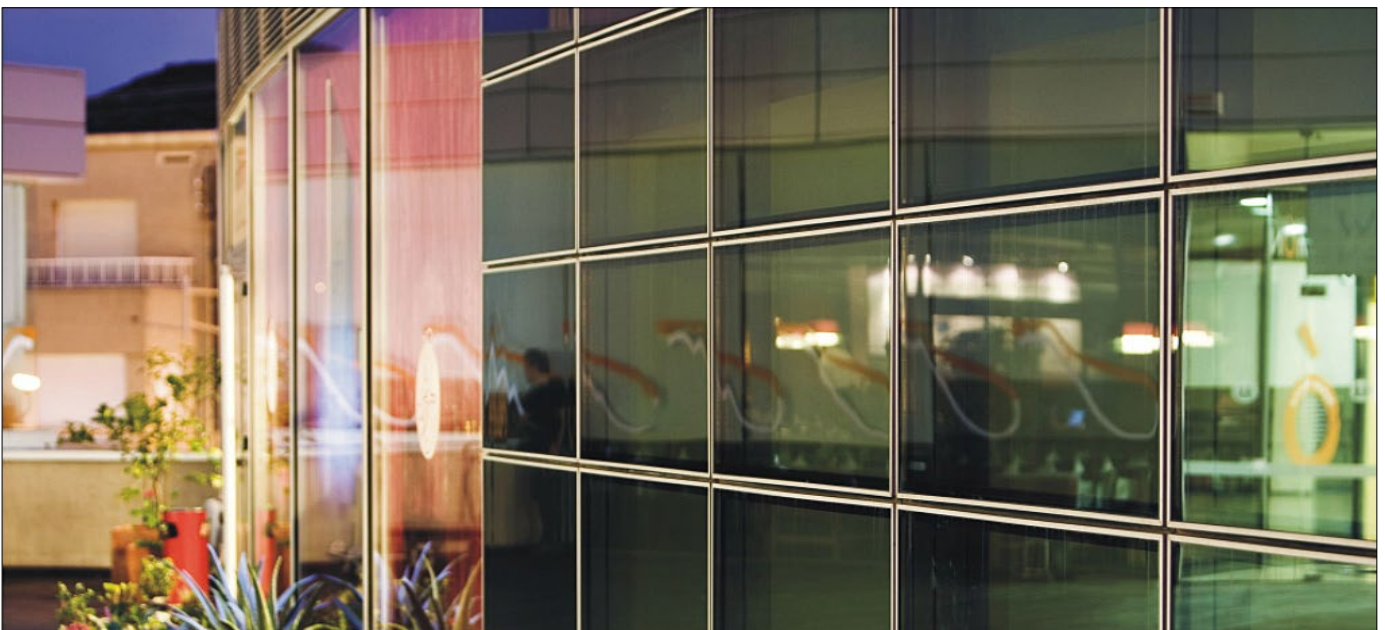
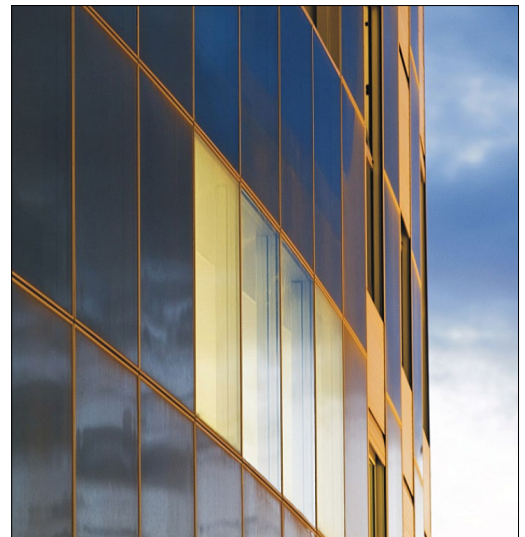
» Internal seen section 52 mm

» Extensive profile range, their mechanical unions allows for all types of façades to be built (vertically, inclined, 90° corners, corners, polygonal) as well as solving large and heavy glazing modulations

» Water tightness elements: drainage pipettes, tear strip gaskets and vulcanized angles

» Mechanical union to the aluminum frame. Outside cover profile (embellisher)

» This system offers a EPDM gasket system which is installed around the perimeter of each module



TECHNICAL DATA

» Glazing

Maximum glazing 28 mm*

Minimum glazing 6 mm

*Consult for greater thicknesses

» Opening possibilities

Hidden top hung projecting

» Sections

Mullion – 52 mm / Transom – 52 mm

» Thermal bridge 18 mm

» Profile thickness

Mullion 2,1 & 3 mm

Transom 2,1 mm

» Maximum / minimum dimensions

Max. Width (L) = 2.500 mm

Max. Height (H) = 2.500 mm

Min. Width (L) = 500 mm

Min. Height (H) = 650 mm

» Maximum weight

Projecting opening 180 Kg



TEST CENTRE

» Transmittance

Ucw from 0,8 (W/m²K)

Please consult dimensions and glazing

» Air permeability

(EN 12152:2000) CLASS AE

» Water tightness

(EN 13114:2001) CLASS RE750

» Wind resistance

(EN 13116:2001) APT

(design loading 1200 Pa- security loading 1800 Pa)

Test reference 3,00 x 3,50 m.

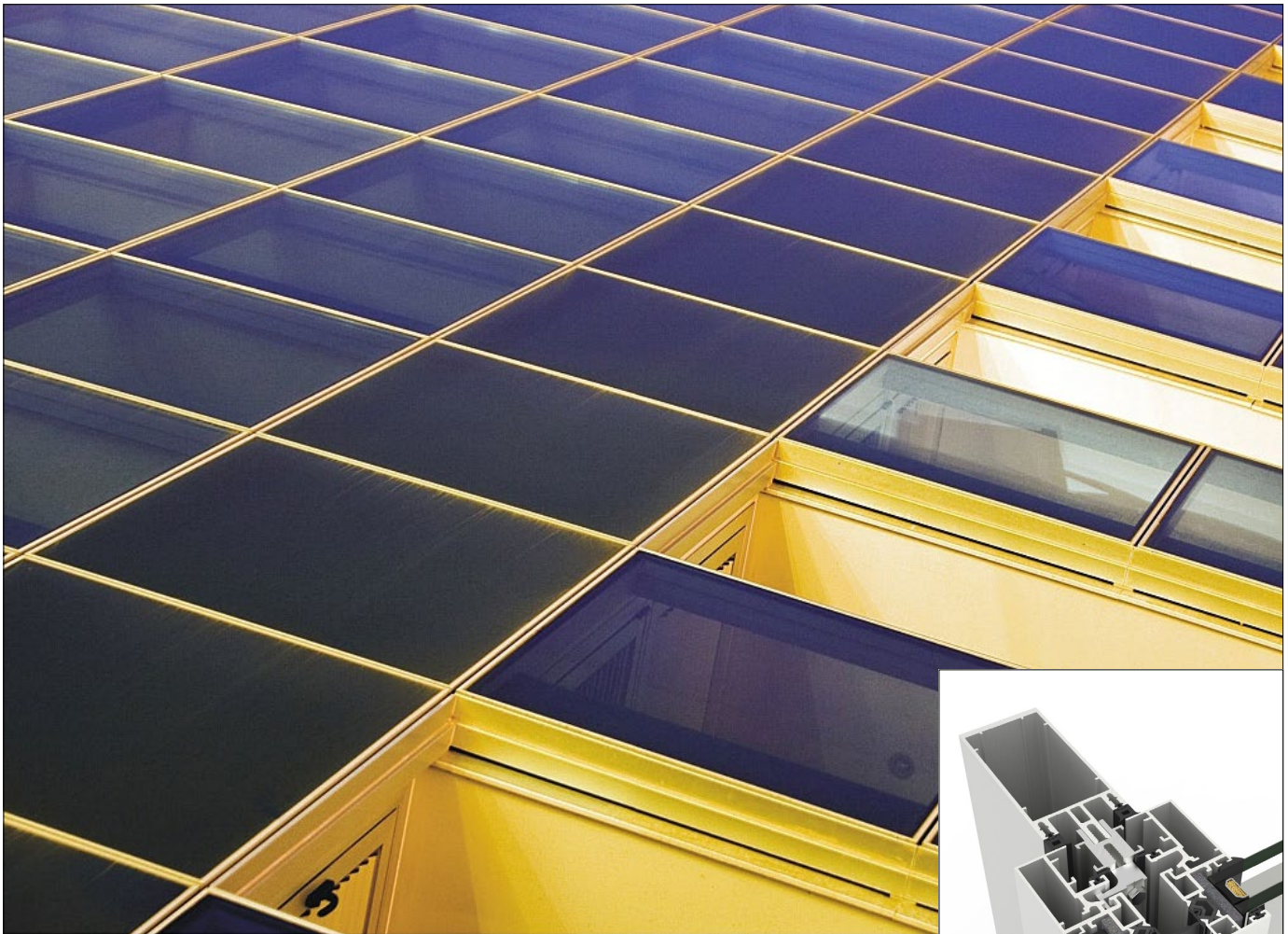
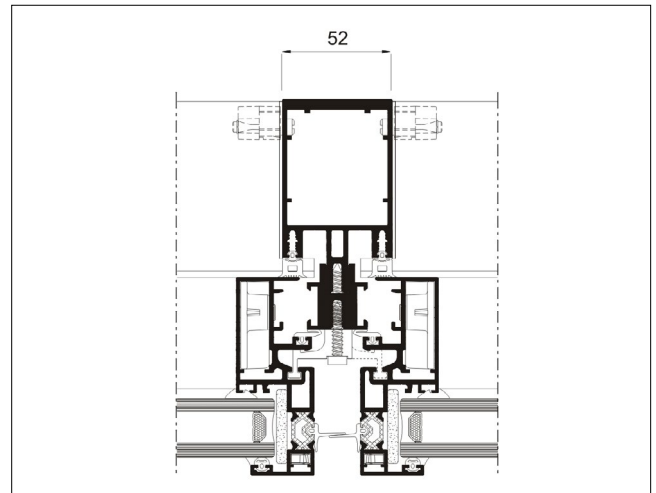
» Finishes

Color powder coating (RAL, mottled and rough)

Wood effect powder coating

Anti-bacterial powder coating

Anodized



YORD Ltd
10 Island Centre Way
Enfield Island Village
Enfield, EN3 6GS

tel: 0203 150 2041
email: enquiries@yord.co.uk
web: www.yord.co.uk