

DESCRIPTION

- » System for sliding windows and doors with straight aesthetic
- » Sashes of up to 280 kg weight allow maximum dimensions of 2500 (W) x 3000 (H) mm.
- » Central minimalist sash encounter of only 47 mm of visible section
- » Stainless steel rails that allow for ultra smooth sliding



TECHNICAL DATA

» Maximum glazing thickness
34 mm

» Opening possibilities
Sliding of 2, 3, 4 & 6 sashes
Possibility of 1 rail (1 sash+ 1 fixed)
Possibility of 3 rails

» Sections
Frame 120 & 115 mm
Sash 50 mm

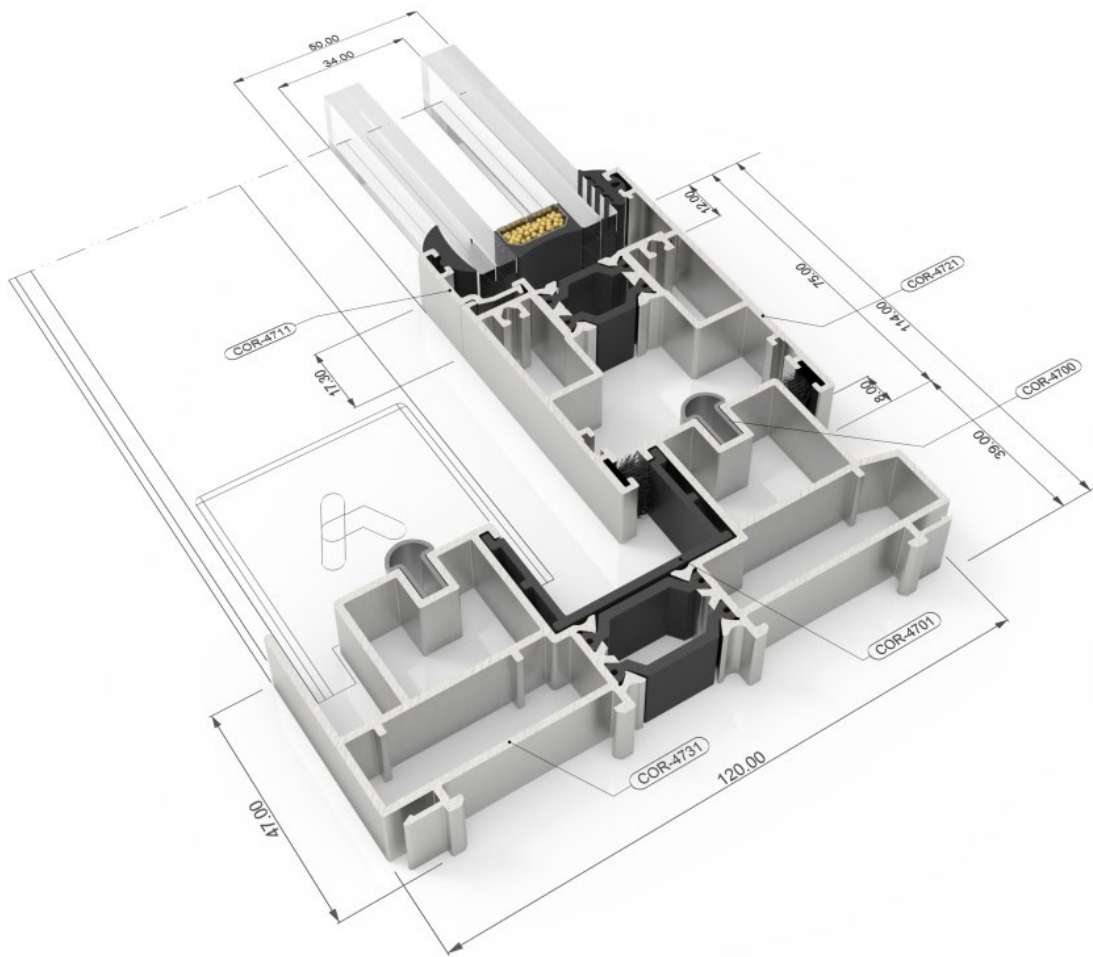
» Profile thickness
Balcony 1,5 mm

» Polyamide strip length
20 & 25 mm

» Maximum dimensions/sash
Width (L) = 2.500 mm
Height (H) = 3.000 mm

» Maximum weight/sash
280 Kg





TEST CENTRE

» Transmittance

Uw from 1,1 (W/m²K)

Please consult typology, dimensions and glazing

» Maximum acoustic insulation

Rw=40 dB

» Air permeability

(EN 12207:2000) CLASS 3

» Water tightness

(EN 12208:2000) CLASS 7A

» Wind resistance

(EN 12210:2000) CLASS C5

Reference test: 1,80 x 2,20 m.

2 sashes

Please consult regarding maximum weight and dimensions for other opening types

» Finishes

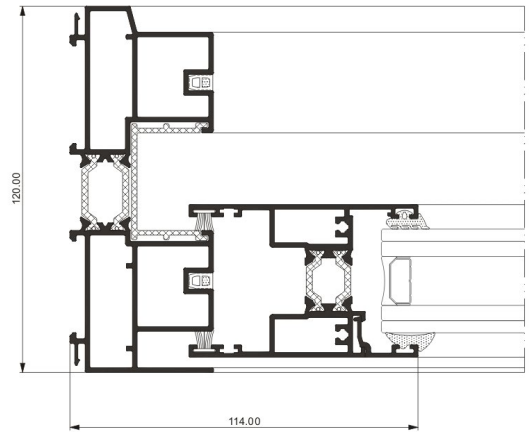
Possibility of bicolor systems

Color powder coating (RAL, mottled and rough)

Wood effect powder coating

Anti-bacterial powder coating

Anodized



YORD Ltd
10 Island Centre Way
Enfield Island Village
Enfield, EN3 6GS

tel: 0203 150 2041
email: enquiries@yord.co.uk
web: www.yord.co.uk