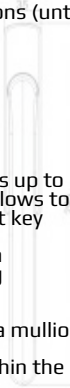


## DESCRIPTION

- » Minimalist sliding system specially suitable for large dimensions (until 4.000 mm/sash of width or height)
- » Possible to cover great openings with a glass surface of 94%
- » Visible section of just 25 mm
- » Outstanding thermal and acoustic performance
- » It comes with the possibility of motorized opening for weights up to 700 kg, and manual opening for up to 400 kg. Additionally, it allows to place multipoint lock systems by operating rod, with or without key
- » The rollers are placed in the frame, and the sashes count with a stainless steel reinforced rolling area which makes the sliding movement smoother
- » Possibility of corner sash encounters at 90° without needing a mullion
- » The motorized version allows to completely hide the sash within the frame in closing position



## TECHNICAL DATA

» Maximum glazing thickness  
54 mm

» Opening possibilities  
Sliding of 2, 4 or 6 sashes  
Possibility of 1 rail and 3 rails  
1 sash + 1 fixed / 2 sashes + 1 fixed  
Possibility of corner sash encounters at 90° without mullions

» Sections  
Frame – 180 mm - 278 mm 3 rails  
Sash – 69 mm

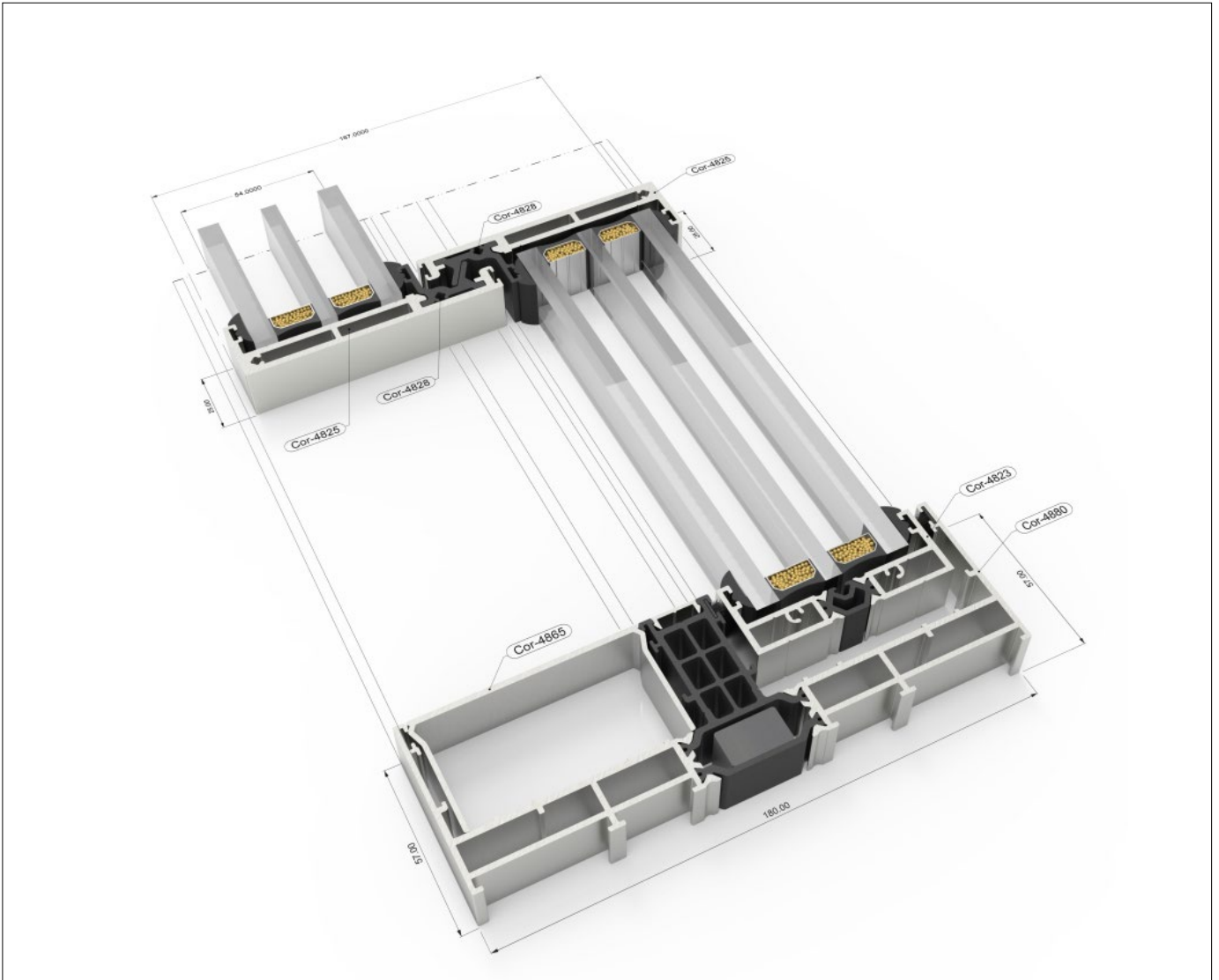
» Profile thickness  
Door 2,0 mm

» Polyamide strip length  
from 18 to 40 mm

» Maximum dimensions/sash  
Width (L) = 4.000 mm  
Height (H) = 4.000 mm  
Glass surface ≤ 14 m<sup>2</sup>

» Maximum weight/sash  
400 Kg Manual  
700 Kg Motorized





## TEST CENTRE

### » Transmittance

Uw from 0,9 (W/m²K)

Please consult typology, dimensions and glazing

### » Maximum acoustic insulation

Rw=43 dB

### » Air permeability

(EN 12207:2000) CLASS 4

### » Water tightness

(EN 12208:2000) CLASS 7A\*/9A\*\*

### » Wind resistance

(EN 12210:2000) CLASS C3

\*Reference test : Balcony 4,00 x 3,00 m. 2 sashes.

\*\*Reference test : Balcony 4,00 x 3,00 m. 1 sash + 1 fixed

Please consult regarding maximum weight and dimensions for other opening types

» Finishes

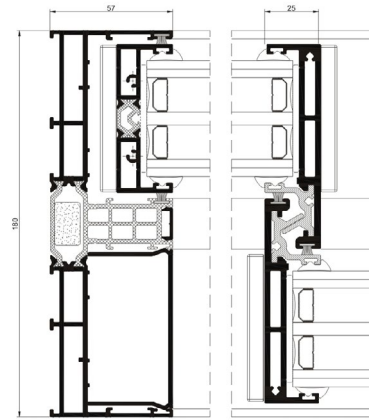
Possibility of bicolor systems

Color powder coating (RAL, mottled and rough)

Wood effect powder coating

Anti-bacterial powder coating

Anodized



YORD Ltd  
10 Island Centre Way  
Enfield Island Village  
Enfield, EN3 6GS

tel: 0203 150 2041  
email: [enquiries@yord.co.uk](mailto:enquiries@yord.co.uk)  
web: [www.yord.co.uk](http://www.yord.co.uk)