

## DESCRIPTION

- » A 60 mm frame depth Euro-Groove hidden sash window system
- » Seen surface of only 63 mm from the outside
- » Maximum glazing surface
- » Extraordinary increase in luminosity
- » Possibility of incorporating hardware with concealed hinges & the security system Evo Security
- » Possibility of straight or curved sashes



## TECHNICAL DATA

» Maximum glazing thickness  
28 mm

» Opening possibilities  
Open In:  
Side hung and turn & tilt of 1 or 2 sashes

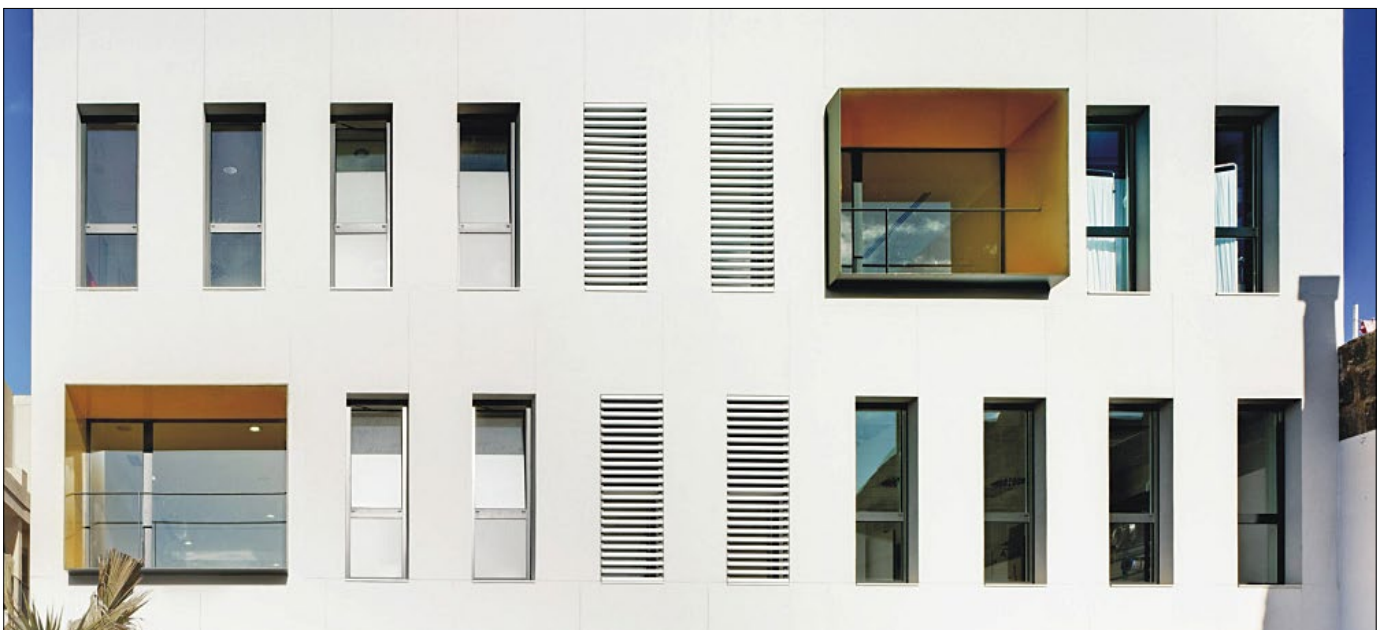
» Profile thickness  
Window 1,6 mm  
Balcony 1,6 mm

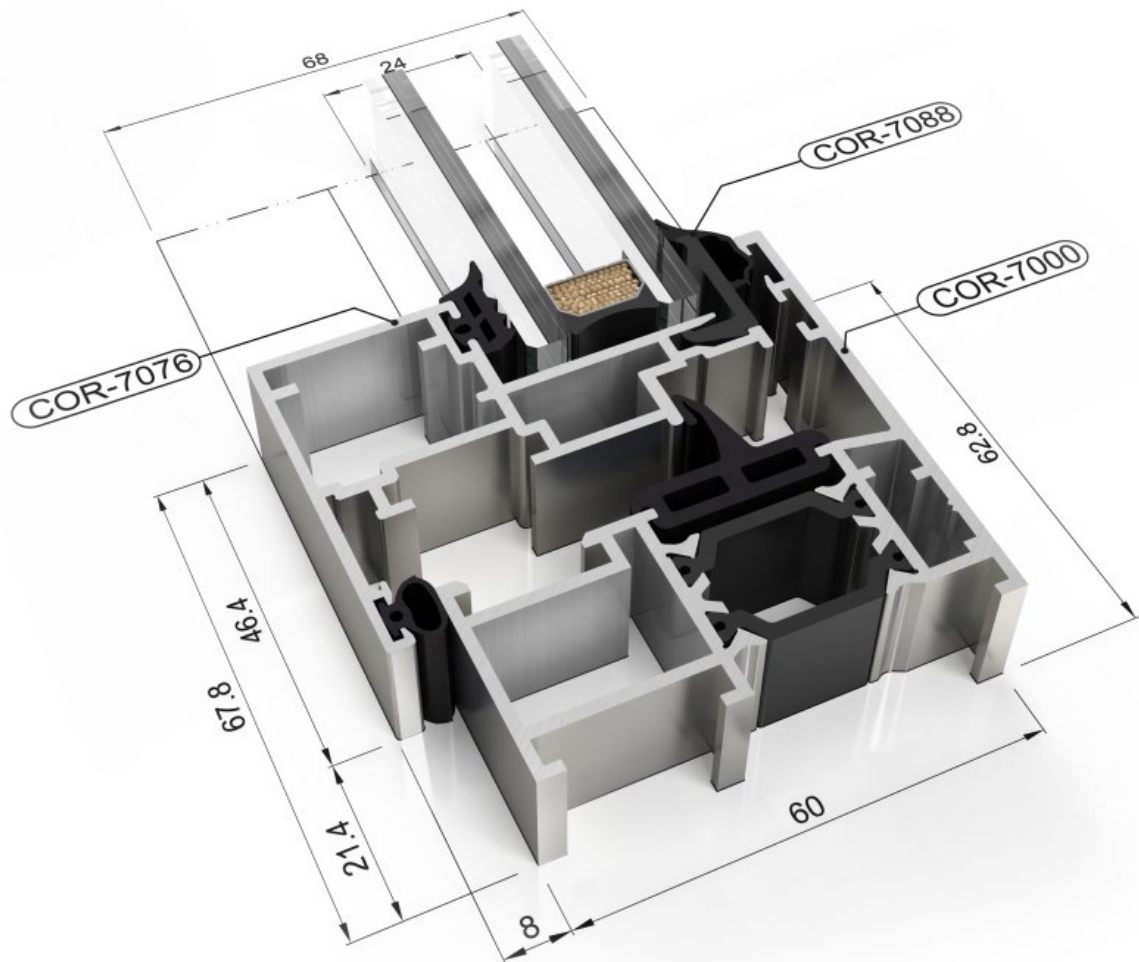
» Sections  
Frame – 60 mm / Sash– 60 mm

» Polyamide strip length  
24 mm

» Maximum dimensions/sash  
Width (L) = 1.300 mm  
Height (H) = 2.400 mm

» Maximum weight/sash  
160 Kg





## TEST CENTRE

### » Transmittance

Uw from 1,5 (W/m<sup>2</sup>K)

Please consult typology, dimensions and glazing

### » Maximum acoustic insulation

Rw=41 dB

### » Air permeability

(EN 12207:2000) CLASS 4

### » Water tightness

(EN 12208:2000) CLASS 9A

### » Wind resistance

(EN 12210:2000) CLASS C5

Reference test 1,30 x 1,55 m. 1 sash window

Please consult regarding maximum weight and dimensions according to types of opening.

» Finished

Possibility of bicolor systems

Color powder coating (RAL, mottled and rough)

Wood effect powder coating

Anti-bacterial powder coating

Anodized

