

DESCRIPTION

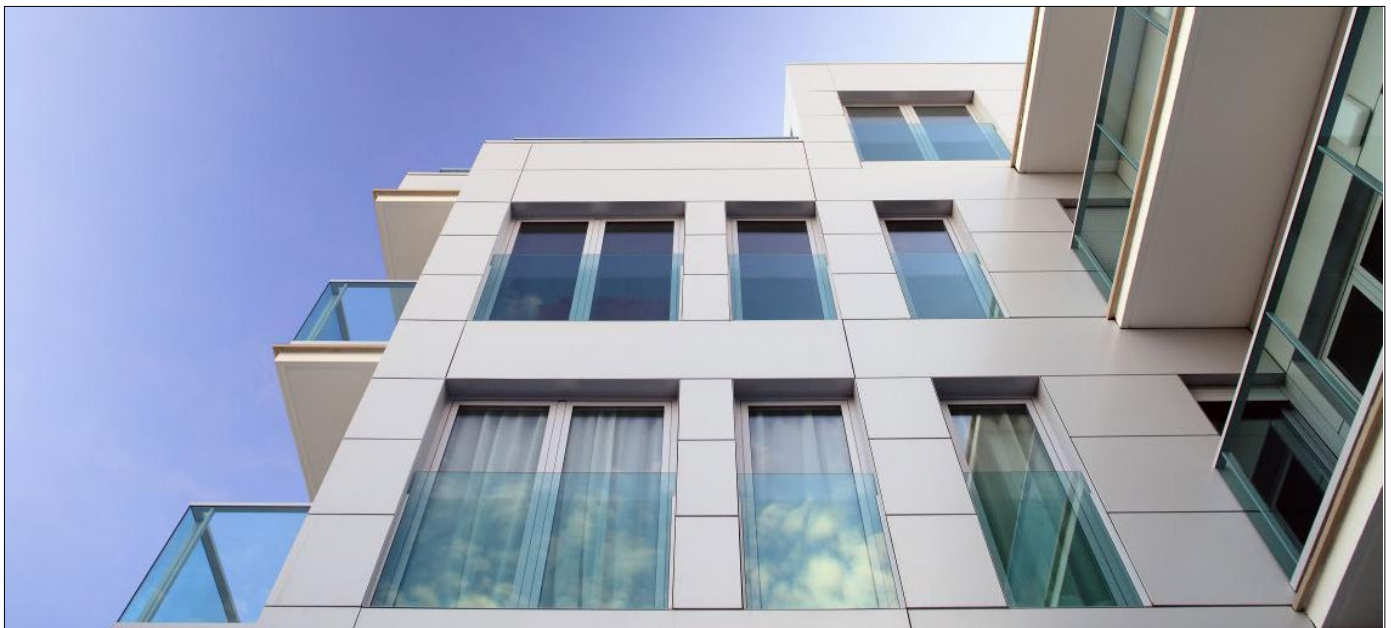
- » Hinged window system with frame depth of 70 mm
- » Polyamide strip length 35 mm
- » Transmittance from 0,9 W/m²K
- » Maximum glazing thickness: 55 mm
- » Possibility of incorporating hardware with concealed hinges & the security system Evo Security

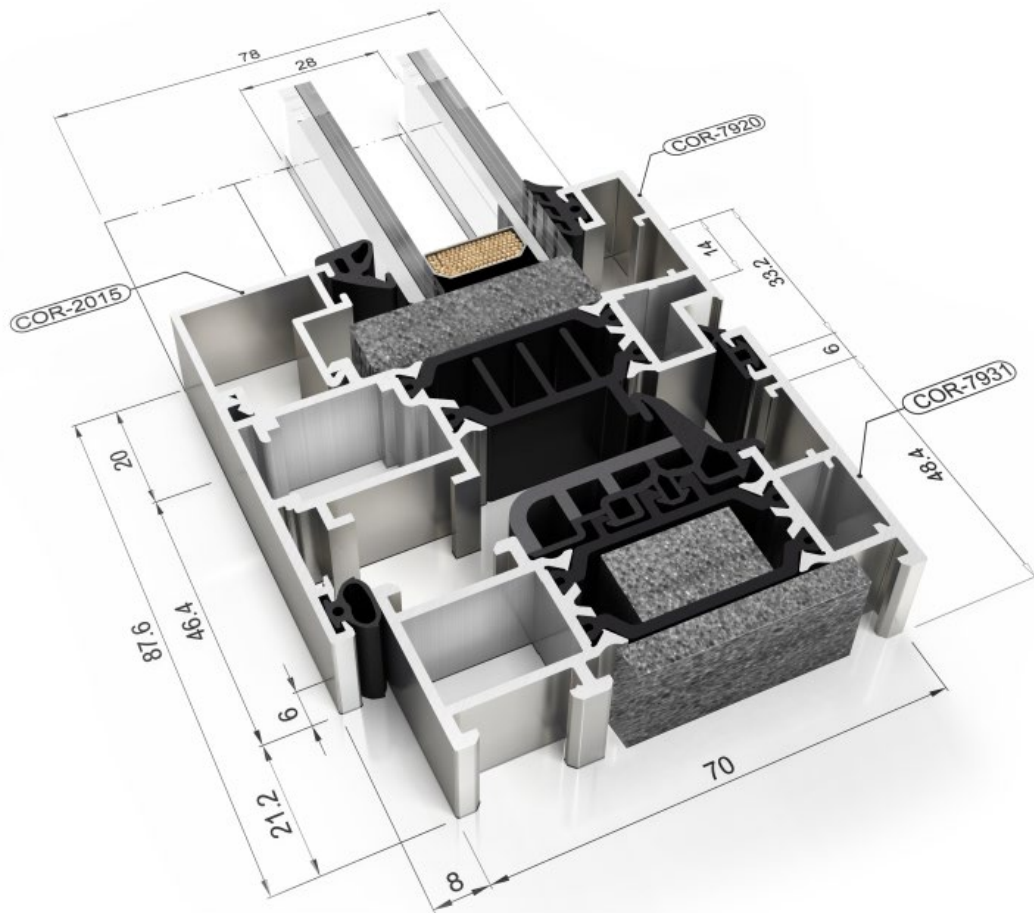


TECHNICAL DATA

- » Maximum glazing thickness 55 mm
- » Opening possibilities
Open inwards:
Side hung, turn & tilt, tilt & parallel, bottom hung
Open outwards:
Side-hung, top hung projecting and hidden pivoting system of either vertical or horizontal axis
- » Sections
Frame – 70 mm / Sash – 78 mm

- » Profile thickness
Window 1,5 mm Door 1,7 mm
- » Polyamide strip length
from 32 to 35 mm
- » Maximum dimensions/sash
Width (L) = 1.600 mm
Height (H) = 2.600 mm
- » Maximum weight/sash
160 Kg





TEST CENTRE

» Transmittance

Uw from 0,9 (W/m²K)

Please consult typology, dimensions and glazing

» Maximum acoustic insulation

Rw=44 dB

» Air permeability

(EN 12207:2000) CLASS 4

» Water tightness

(EN 12208:2000) CLASS E1200

» Wind resistance

(EN 12210:2000) CLASS C5

Reference test 1,23 x 1,48 m.

2 Sashes window.

» Burglar resistant

(EN 1627:2011): Grade RC2 (WK2)

Reference test 2,52 x 1,47 m. 1 sash

with EVO SECURITY hardware

Please consult regarding maximum weight and dimensions according to types:

- » Finishes
- » Possibility of bicolor systems
- » Color powder coating (RAL, mottled and rough)
- » Wood effect powder coating
- » Anti-bacterial powder coating
- » Anodized

